

## THE NATURAL HISTORY OF MODEL ORGANISMS

# Advancing biology through a deeper understanding of zebrafish ecology and evolution



**Abstract** Over the last two decades, the zebrafish has joined the ranks of premier model organisms for biomedical research, with a full suite of tools and genomic resources. Yet we still know comparatively little about its natural history. Here I review what is known about the natural history of the zebrafish, where significant gaps in our knowledge remain, and how a fuller appreciation of this organism's ecology and behavior, population genetics, and phylogeny can inform a variety of research endeavors.

DOI: [10.7554/eLife.05635.001](https://doi.org/10.7554/eLife.05635.001)

DAVID M PARICHY\*

### Introduction

Like so many model organisms, the zebrafish was chosen for its tractability and, especially, its potential for genetic analysis and cellular observation. The founder of 'modern' zebrafish research, George Streisinger, had a passion for fish but it seems unlikely that he chose this particular minnow because of any prior insights into its natural history or its phylogenetic position within the teleosts (bony fishes). Rather, the zebrafish was readily available, it was easy to breed, and its lovely, transparent embryo was quick to develop. Streisinger's efforts at the University of Oregon, and the hard work of many early adopters of the species, most notably other labs in Oregon, Tübingen and Boston, propelled zebrafish into the top tier of NIH-funded biomedical models (*Grunwald and Eisen, 2002; Kinth et al., 2013*). The zebrafish model 'system' now comprises a sequenced genome, thousands of mutants, transgenic tools, staging series, and a wealth of know-how for imaging, embryological manipulation, drug discovery and more.


Given all of these resources, one might wonder how much is known about zebrafish as

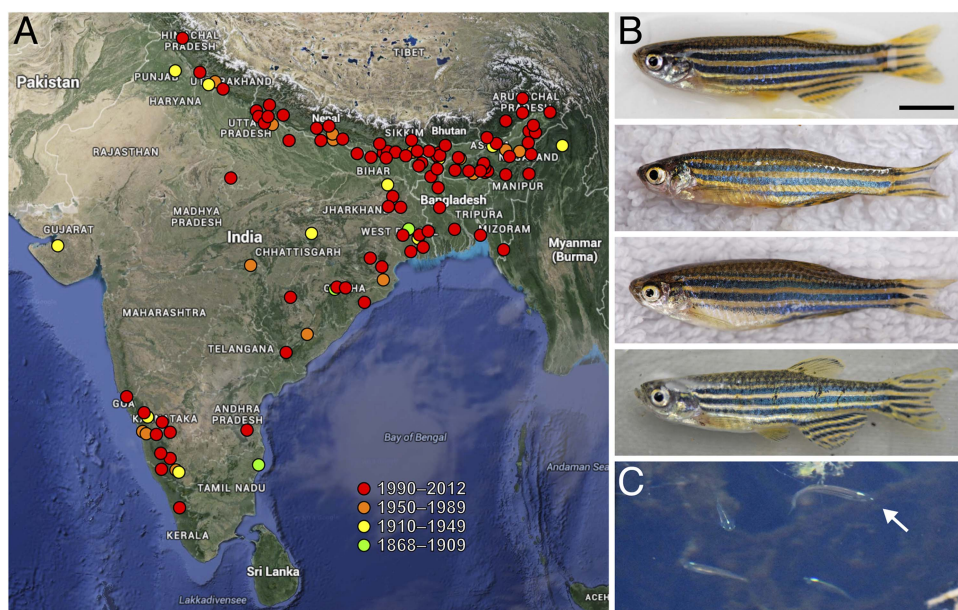
an organism (rather than as a system), and whether it matters. Here, I review briefly what we do and don't know about wild zebrafish, and reflect upon the ways in which a deeper appreciation of zebrafish in their natural habitat can inform a range of biological enquiries.

### Range and habitat

Zebrafish were described by a Scottish physician, Francis Hamilton, under the auspices of the British East India Company (*Hamilton, 1822*). Hamilton's "beautiful fish" with its "several blue and silver stripes on each side" has undergone a few changes to its Latin name and is now correctly referred to as *Danio rerio* (original and more recent synonyms include *Cyprinus* and *Brachydanio*). Formally described in the state of Bihar in northeastern India, zebrafish have also been collected in the south and west of peninsular India, past the city of Bangalore, and beyond India, as far north as Pakistan and Nepal, as well as east into Bangladesh and possibly Myanmar (*Figure 1*) (*Engeszer et al., 2007b; Spence et al., 2008; Arunachalam et al., 2013*).

\*For correspondence:  
dparichy@u.washington.edu

 Copyright Parichy. This article is distributed under the terms of the [Creative Commons Attribution License](https://creativecommons.org/licenses/by/4.0/), which permits unrestricted use and redistribution provided that the original author and source are credited.



**Figure 1.** Zebrafish and their geographic range. (A) Historic and more recent sites where zebrafish have been reported in India, Nepal, Bangladesh and possibly Myanmar (Spence *et al.*, 2006; Engeszer *et al.*, 2007b; Spence *et al.*, 2008; Whiteley *et al.*, 2011; Arunachalam *et al.*, 2013). (B) Zebrafish from several populations in northeastern India (Engeszer *et al.*, 2007b). The upper two fish are males and the lower two fish are females; males tend to have a slightly yellow cast ventrally. (C) A group of zebrafish (a single fish is highlighted with the arrow) in a stream-side pool in Meghalaya, India, north of Bangladesh. Scale bar: 5 mm (B). Image credits: D Parichy. DOI: 10.7554/eLife.05635.002

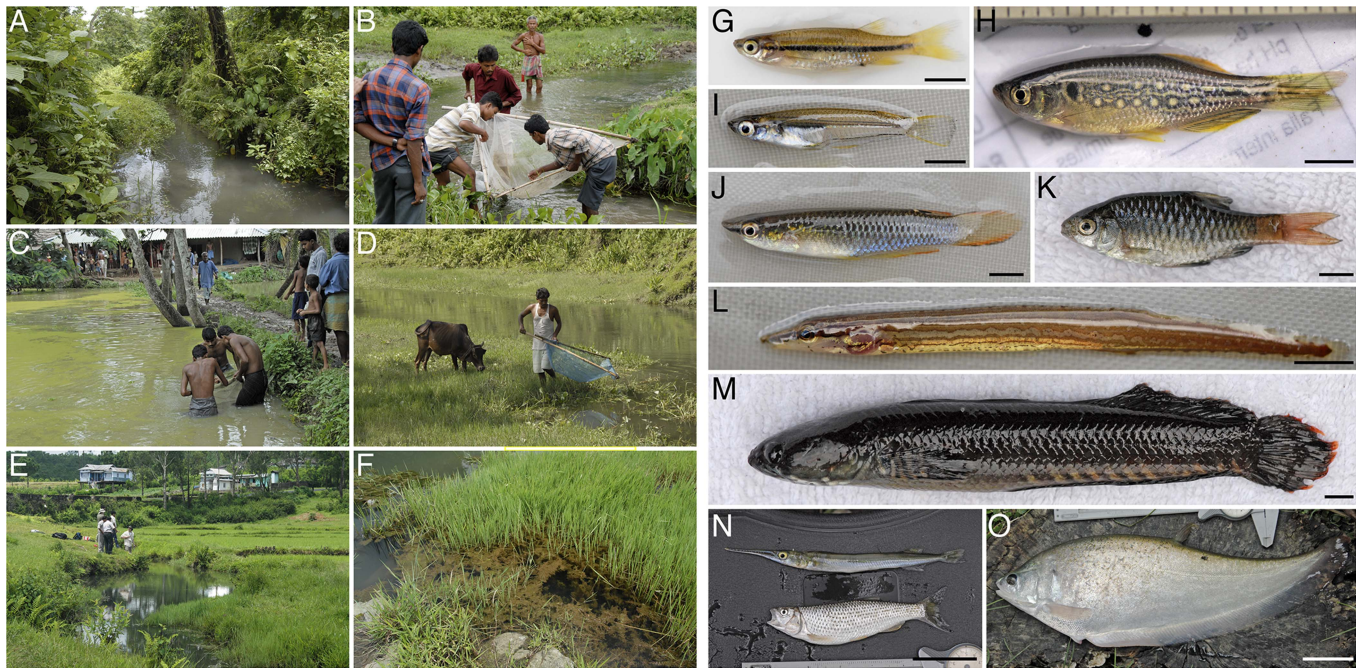
Although found by Hamilton near the Ganges, it seems unlikely that individual zebrafish ever intentionally end up in such a large river. Rather, their typical habitat consists of shallow, slow moving streams, and, particularly, still pools that form alongside streams during the monsoons. The water in these streams and pools is typically clear, but there can be mud, sand or gravel on the bottom of the stream or pool, so the water often becomes turbid in the rain. Some habitat complexity is provided by aquatic vegetation, and cover is sometimes available from overhanging vegetation or from overhanging banks. Having co-occurred with humans for thousands of years, zebrafish also make themselves at home in rice paddies, drainage ditches, stock ponds and the like, although they certainly suffer the effects of pollution and habitat loss as well (Figure 2A–F). Zebrafish have been reported at elevations of ~8–1576 m and in a range of water conditions, including temperatures between 12–39°C, pH levels of 5.9–9.8, and salinities of ~0.01–0.8 (Spence *et al.*, 2006; Engeszer *et al.*, 2007b; Arunachalam *et al.*, 2013).

Zebrafish are omnivores, consuming larval and adult insects, as well as small crustaceans and other zooplankton, but also partaking of algae,

plant material and assorted detritus (McClure *et al.*, 2006; Spence *et al.*, 2007b; Arunachalam *et al.*, 2013). Interestingly, recently caught wild zebrafish and domesticated lab strains have similar intestinal bacteria, suggesting a core gut microbiota (Roeselers *et al.*, 2011) important for growth and development (Cheesman *et al.*, 2011; Semova *et al.*, 2012).

Potential competitors for food, and perhaps other resources as well, include other minnows, like *Esomus* and *Puntius*, and similar small fishes (Figure 2G,I–K). Zebrafish can also be found with larger *Danio* species (Figure 2H); although adults may occupy distinct microhabitats, competition among larvae is conceivable. Of course, zebrafish are certainly on the menu themselves: snakehead fish (*Channa*), knifefish (*Notopterus*) and catfish, birds such as kingfishers and herons, and even dragonfly larvae, are all likely predators of adults, and a great many species probably eat zebrafish eggs and larvae (Figure 2L–O; Engeszer *et al.*, 2007b). Nevertheless, the impact of competition and predation on the survival and reproduction of wild zebrafish remain entirely unknown.





**Figure 2.** Zebrafish habitat and co-occurring species. (A–F) Zebrafish are found in streams both pristine (A) and shared with people (B, D, E), in ephemeral pools at stream margins (F; a close-up of **Figure 1C**), and in man-made bodies of water (C). (G–K) Many fish might compete with zebrafish at one or more of its life stages, including *E. danricus* (G), *D. dangila* (juvenile; H), *Oryzias* (I), *Aplocheilus panchax* (J), and *P. shalynius* (K). (L–O) Among potential predators are *Mastecembalus* (L), *Channa* (M), *Xenentodon* (top) and *Barilius* (N), and *Notopterus* (O). For details see **Engeszer et al. (2007b)**. Scale bars: 5 mm (G–M); 5 cm (N, O). Image credits: D Parichy.

DOI: 10.7554/eLife.05635.003

## Behavioral interactions and syndromes

Field observations of zebrafish behavior are few and anecdotal, and so much of what zebrafish do in nature has to be inferred from their behavior in the lab. One behavior that has received considerable attention is the formation of loose social aggregations, or shoals, which have been observed in the field (see **Figure 1C**) and studied in the lab (**Engeszer et al., 2007b; Gerlai, 2014**). This behavior might provide protection from predators, improved foraging success, or access to mates. Shoaling increases steadily from early larval stages, and individuals ‘imprint’ on a particular visual phenotype, showing a preference for this phenotype by the time they are juveniles (**Engeszer et al., 2004, 2007a; Spence and Smith, 2007; Mahabir et al., 2013**). Interestingly, wild-caught and lab fish (both previously imprinted on the ‘wild type’) have similar preferences for prospective shoaling partners when presented with fish that have different pigment

patterns and other phenotypes, although the specifics differ between sexes: female preferences appear to be complex, whereas males show strong preferences that correlate with stripe quality and species identity (**Engeszer et al., 2008**). Many additional factors might also influence whether or not zebrafish shoal together in the wild, including fish size, group size, sex ratio, olfactory stimuli, kin recognition, predation risk and light regime (e.g., **Pritchard et al., 2001; Gerlach and Lysiak, 2006; Ruhl et al., 2009**).

Lab strains of zebrafish spawn all year round, but breeding in the wild occurs primarily during the summer monsoons, when ephemeral pools appear; these presumably offer plenty to eat and some shelter from currents and predators. Still waters might also facilitate pheromonal communication relevant to oogenesis and courtship (**Bloom and Perlmutter, 1977; van den Hurk and Lambert, 1983; van den Hurk et al., 1987; Gerlach, 2006**). Spawning tends to occur near daybreak, and can involve male territoriality, as well as female preferences for oviposition

(egg-laying) sites (*Spence et al., 2007a, 2008*). Lab studies indicate that courtship and mating behaviors are stereotypic, although some of the details may depend on the conditions in which observations have been made. Behaviors include the initial approach; chasing by the male and touching of the male's nose to the female's side or tail; male circling and quivering; the female leading the male to an oviposition site, or the male pinning the female against an object; and oviposition itself (*Darrow and Harris, 2004; Sessa et al., 2008; Kang et al., 2013*). Females can lay up to several hundred eggs at once, or smaller numbers every few days, but the actual number of offspring from any given spawning is highly variable. Indeed, males can differ in the clutch sizes they elicit from females, (*Spence and Smith, 2006*), possibly owing to differences in body size (*Skinner and Watt, 2007*); dominance hierarchies can also influence reproductive success (*Paull et al., 2010*). Although reproductive maturity can be reached in as little as 4–6 weeks in the lab, where zebrafish are known to live for up to several years, we don't as yet know about the timing of their maturation or their longevity in the wild. A deeper understanding of courtship and breeding preferences, as well as life history in nature, will be interesting, and may facilitate research in the lab through improvements in spawning and rearing efficiencies (*Sessa et al., 2008; Adatto et al., 2011; Nasiadka and Clark, 2012*).

Recently, wild zebrafish brought to the lab have provided new insights into behavioral syndromes, in which behaviors co-vary, as in a continuum of boldness and aggression, or correlated changes that occur during domestication (for example, changes in both fearfulness and activity patterns) that likely derive from intentional selection on some traits and relaxed selection on others (*Moretz et al., 2007; Norton et al., 2011*). Including wild zebrafish in such studies dramatically expands the range of variation. Indeed, comparisons of zebrafish isolated from different geographic regions, and different lab strains, have revealed striking differences in behavioral syndromes among populations (*Robison and Rowland, 2005; Oswald and Robison, 2008; Drew et al., 2012; Martins and Bhat, 2014*). That such differences can be heritable (*Wright et al., 2006; Oswald et al., 2013*) suggests that the genetic bases for natural variation in behavioral syndromes, and the evolution of behavioral traits more generally, can be studied using this species. Of critical importance to all of these endeavors are

additional observations and experiments in the field, in order to better understand the zebrafish behavioral repertoire and its significance for individual fitness, and also to determine the extent to which habitat differences between field and lab might impact our ability to generalize results from one context to the other.

## Population genetics and sex determination

Genomics is another arena in which wild zebrafish are providing valuable insights. Most lab zebrafish represent any of several commonly used strains initiated with founders obtained from the pet trade or, in some cases, from collections in the wild. Some strains have been maintained to preserve allelic variation, others to intentionally minimize genetic diversity, to facilitate genetic mapping and genome editing, and to control genetic background effects on mutant and other phenotypes (*Haffter et al., 1996; Rauch et al., 1997; Trevarrow and Robison, 2004; LaFave et al., 2014*). One theme to emerge is that laboratory strains differ substantially from one another, and even some of the more 'inbred' strains maintain remarkably high levels of genetic diversity, as measured by microsatellite variation, single nucleotide polymorphisms (SNPs), and gene copy number variants (*Nechiporuk et al., 1999; Guryev et al., 2006; Coe et al., 2009; Whiteley et al., 2011; Brown et al., 2012*).

When samples from wild populations are analyzed, it becomes clear that even the extensive variation in lab strains represents but a tiny fraction of total zebrafish genetic diversity (*Coe et al., 2009; Whiteley et al., 2011; Brown et al., 2012; Patowary et al., 2013*). Moreover, despite the predilection of zebrafish to occupy flood plains—which might suggest extensive gene flow—analyses of wild fish across the species' range indicate this is not always the case: several populations in the Ganges/Brahmaputra River basins form a genetic group (into which also fall three lab strains), but two other, deeply divergent groups have been identified as well (*Whiteley et al., 2011*). It seems likely that further population-level sampling will reveal additional, genetically differentiated populations, which could provide outstanding opportunities to understand local adaptation.

The considerable genetic diversity of zebrafish is put into perspective by comparisons with the human genome. For instance, complete genomic sequences of just two gynogenetic ('double haploid'; *Streisinger et al., 1981*) zebrafish of

different lab strains revealed ~7 million SNPs between them; a single, wild zebrafish harbored over 5 million SNPs within its own genome (Howe et al., 2013; Patowary et al., 2013). By contrast, more than a thousand sequenced human genomes have yielded a 'mere' 38 million SNPs in total and an average of only 3.6 million SNPs per diploid individual (1000 Genomes Project Consortium et al., 2012). If the above zebrafish results are typical of this species, this works out to SNPs being ~four-fold more frequent in zebrafish than they are in humans, after correcting for genome size. Copy number variants are likewise ~1.5-fold more prevalent in zebrafish than in human genomes (Brown et al., 2012). It remains unclear why zebrafish are so diverse genetically; wild zebrafish do not seem to carry an excess of lethal mutations as compared to other vertebrates (McCune et al., 2002, 2004).

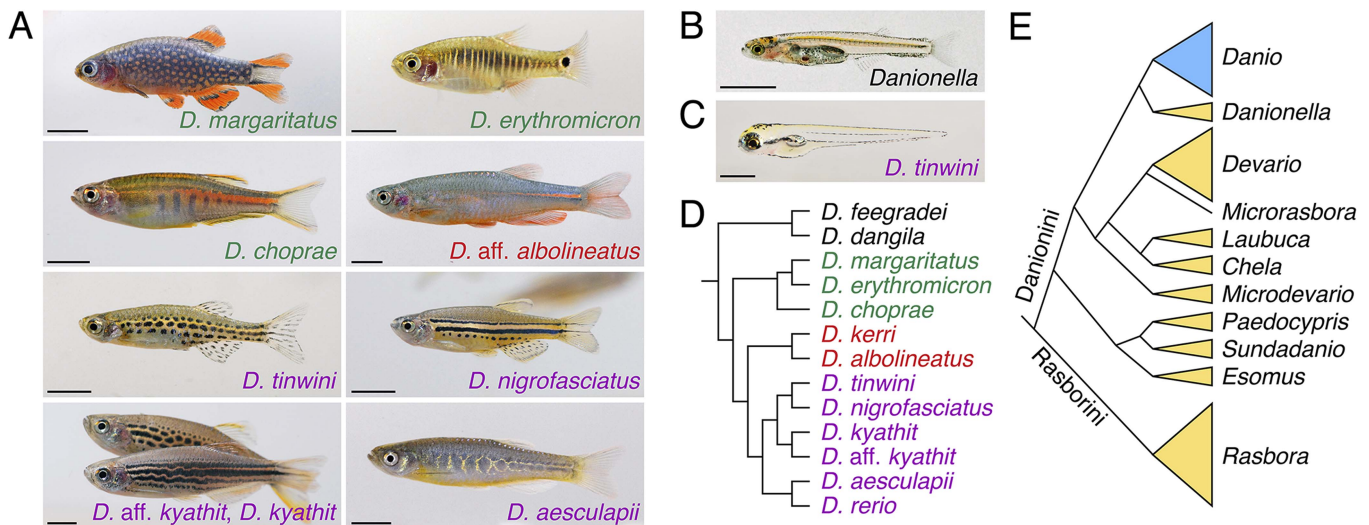
This level of genetic variation in zebrafish poses some challenges, such as the added complexity of assembling genomic sequence and the need to control rigorously for genetic background in experiments. It also provides opportunities: to study genome evolution at a fine scale, and gene effects that are relevant to complex traits and genetic disease in admixed human genomes. Benefitting recently from this diversity is our understanding of sex determination. In comparison to so many species—biomedical models and otherwise—the lack of a demonstrated sex-determining system had long been perplexing, and just a bit embarrassing, to researchers using zebrafish (though presumably not to the fish themselves). Genetic analyses of lab strains have identified chromosomal regions associated with sex determination, yet, surprisingly, these differed between studies (Bradley et al., 2011; Anderson et al., 2012; Liew et al., 2012; Howe et al., 2013). Analyses of wild zebrafish suggest a reason for the discrepancies: these fish have a major sex determinant (WZ/ZZ) on chromosome 4—which has features similar to sex chromosomes in other species—yet this determinant has been lost from lab strains (Wilson et al., 2014). This suggests that founder effects, or domestication itself, led to seemingly ad hoc systems employing multiple sex determinants, probably of small original effect in the wild. Thus, comparison of wild and lab zebrafish has revealed a serendipitous example of how sex-determining mechanisms can evolve. Whether this discovery has implications for understanding reproductive behavior or physiology in lab strains relative to wild fish has yet to be explored.

## Zebrafish relatives and their phylogeny

Because every organism is a mix of shared and derived traits, even the biomedical 'models' sometimes differ markedly from other species in their broader phylogenetic group. Comparisons with 'non-model' relatives can thus provide important insights into the generality of inferences about development, genetics, and behavior (Parichy, 2005; Harris et al., 2014). Of course, diversity of form and the evolution of underlying mechanisms can be interesting in their own right. Although zebrafish of disparate populations are not grossly dissimilar morphologically (Arunachalam et al., 2013) (see for example, Figure 1B), other species in the large zebrafish family Cyprinidae differ dramatically in size, shape and other traits (Tang et al., 2010). Indeed, the subfamily Danioninae includes not only zebrafish, which grows to 4–5 cm, but also *Danio dangila* (Figure 2H), which grows to ~13 cm, and some of the world's smallest vertebrates, like *Danionella* (Figure 3B) and *Paedocypris*, which mature in a larval-like form at only ~1–1.5 cm (Roberts, 1986; Britz et al., 2009; Mayden and Chen, 2010).

One trait that differs among *Danio* and that has received attention is the pigment patterns of adult fish. In contrast to the distinct stripes of zebrafish, other danios have vertical bars, spots, reduced numbers of stripes, uniform arrangements of pigment cells, and other patterns (Figure 3A) (McClure, 1999; Parichy and Johnson, 2001; Quigley et al., 2004, 2005; Parichy, 2006). When zebrafish are crossed to other *Danio* species in the lab, the hybrid progeny's pigmentation patterns often resemble that of zebrafish, indicating that zebrafish pigmentation alleles are frequently dominant to those of other species (Parichy and Johnson, 2001; Quigley et al., 2005). A pattern consisting initially of two stripes is likely to be ancestral in *Danio*, and vestiges of these stripes occur in many species, even ones that ultimately develop very different patterns (Quigley et al., 2004; Mills et al., 2007). In zebrafish, adult stripes comprise pigment cells of several lineages (Parichy and Spiewak, 2015) and the formation of this pattern depends on thyroid hormone (McMenamin et al., 2014), positional cues, and interactions among the pigment cells themselves (Nakamasu et al., 2009; Frohnhofer et al., 2013; Patterson and Parichy, 2013; Watanabe and Kondo, 2015). Across *Danio*, the contributions of pigment cell classes to adult patterns differ, as do





**Figure 3.** Zebrafish relatives and phylogeny. (A) Examples of *Danio* pigment patterns, including spotted and striped morphs of *D. kyathit*. (B) Adult male of the miniaturized species *Danionella dracula*. (C) Larval *D. tinwini* (3 days post-fertilization), illustrating a typical *Danio* early larval pigment pattern. (D) Relationships within *Danio* (redrawn from: **McCluskey and Postlethwait, 2015**). (E) Relationships within Danioninae (simplified and redrawn from: **Tang et al., 2010**). Branch lengths in D and E are arbitrary. Scale bars: 5 mm (A, B); 0.5 mm (C). Image credits: D Parichy.

DOI: 10.7554/eLife.05635.004

the genetic requirements of the cells (**Quigley et al., 2004; McMenamain et al., 2014**) and probably the nature of pigment cell interactions as well (**Quigley et al., 2005**). A recent study identified *cis* regulatory changes in gene expression—and associated alterations in the timing of pigment cell differentiation—that have likely contributed to the evolution of a uniform pattern in *D. albolineatus* (**Patterson et al., 2014**).

Although the molecular and cellular mechanisms that underlie pattern development and evolution are becoming better understood, the behavioral and ecological significance of *Danio* pigment patterns remain largely unknown. By extension, it remains unclear whether species differences in patterns are themselves adaptive; alternative phenotypes might simply represent independent and equally good ‘solutions’ to similar selective factors. Adult pigment patterns of other teleosts can function in species recognition, mate choice, and predation avoidance (**Price et al., 2008**), and stripes of adult zebrafish seem likely to influence shoaling (**Engeszer et al., 2008**). A fuller understanding of pattern significance will require not only more experiments, but also more information about the differences in species’ habitats, including factors both biotic (such as predation regimes) and abiotic (such as light quality).

In contrast to the diversity of adult patterns, early larval patterns of different *Danio* species are

nearly indistinguishable from one another (**Quigley et al., 2004**) (**Figure 3C**). Because larvae develop in shallow water, and larval pigmentation covers the central nervous system and developing gonads, protection from UV exposure (eg. **Mueller and Neuhaus, 2014**) is an attractive, albeit untested, functional hypothesis to explain the evolutionary conservation of this pattern.

Analyses of trait evolution and mechanisms of speciation are greatly facilitated by a robust understanding of species relationships. To date, studies of the subfamily Danioninae have arrived at somewhat different interpretations of the group (**Fang, 2003; Rüber et al., 2007; Fang et al., 2009; Mayden and Chen, 2010; Liao et al., 2011**), although these differences are likely to be resolved with sampling of additional *Danio* species and more sequence within species. A recent phylogenetic analysis suggests the existence of two large ‘tribes’ within Danioninae, Rasborini and Danionini (**Figure 3E**), the latter including *Danio* and *Danionella*, as well as *Esomus* and *Devario* (such as the ‘giant danio’ *Devario aequipinnatus*, common in the pet trade) (**Tang et al., 2010**). Interestingly, this phylogenetic analysis also suggests that extreme miniaturization may have evolved independently in *Danionella* and *Paedocypris*.

Within *Danio* itself, 20 species are considered valid taxonomically (**Froese and Binohlan, 2014**) but several have yet to be included in

## Box 1. Outstanding questions about the natural history of the zebrafish

- What are the selective factors (biotic and abiotic) that impinge upon zebrafish survival and reproduction in the wild?
- Are there subtle—or not so subtle—differences in morphology, physiology or behavior among natural populations, and are such differences adaptive?
- Do female zebrafish choose their mates in nature, and if so, what criteria do they use?
- What are the specific genetic changes underlying the evolution of divergent sex determination mechanisms between wild fish and lab strains?
- How many more *Danio* species are there, what are their evolutionary relationships and what factors have influenced speciation and morphological diversification in the genus?

DOI: [10.7554/eLife.05635.005](https://doi.org/10.7554/eLife.05635.005)

phylogenetic reconstructions [e.g., (Fang, 1997a, 1997b, 2000; Fang and Kottelat, 1999; Kullander et al., 2009; Kullander, 2012)]. Many species also likely await discovery, particularly in Myanmar and nearby countries, which seem to be the center of *Danio* diversity.

Phylogenetic reconstructions of *Danio* mostly agree that two larger species, *D. dangila* and *D. feegradei*, split early from the other, smaller species, indicating dramatic evolutionary changes in body size even within this genus. Phylogenies also agree on several internal groupings, although the precise ordering of species closest to zebrafish has been unclear (Fang, 2003; Quigley et al., 2005; Mayden et al., 2007; Fang et al., 2009). A recent study using extensive genomic sampling (McCluskey and Postlethwait, 2015) to examine relationships within a '*D. rerio* species group' identified the poorly known *D. aesculapii* (Kullander and Fang, 2009) as a candidate sister species to zebrafish (Figure 3A,D). Interestingly, most of these species are restricted to one or two hydrologic basins; the two species with the broadest ranges, *D. rerio* and *D. albolineatus*, are non-overlapping, whereas *D. rerio* shares a basin in the east of its range with *D. aesculapii*. This same study also revealed instances of gene flow during the origin of these species, including the transfer of alleles between *D. kyathit* and zebrafish lineages, and between *D. aesculapii* and *D. kerri*/*D. albolineatus* lineages. Such 'horizontal' movements of alleles complicate the assessment of species relationships: indeed, analyses that allowed for different gene trees across loci (reflecting ancestral instances of hybridization and genetic introgression) provided only weak support for the sister

relationship between *D. rerio* and *D. aesculapii*. It will be exciting to further unravel how speciation is proceeding in this group as new *Danio* are discovered and new sequences gathered for analysis, and as roles for hybridization, as well as for geography and other potential isolating mechanisms, are defined.

### Future directions

Recent studies illustrate how wild zebrafish and its relatives can contribute to research programs spanning ecology and behavior, genetics and genomics, and development and evolution. Some specific topics that would benefit from more attention have been cited already and some particularly compelling open questions are listed in Box 1. An additional fruitful area will be the development of genomic resources, including fully sequenced genomes for other species of *Danio* and for more distant cyprinids. These additional genomes will greatly facilitate the identification of gene regulatory domains and how they evolve (Müller et al., 2002; Camp et al., 2012; Patterson et al., 2014) and will provide new insights into the evolution of genes, genomes and phenotypes more broadly.

The differences between wild and lab zebrafish cited above also serve as a cautionary tale about generalizing from particular populations to the species as whole. For example, given their range and genetic variability, a single set of optimal conditions for the growth and development of wild zebrafish is unlikely, let alone for lab strains that have experienced very different selective regimes. Likewise, it remains unclear whether environmental enrichment, to mimic the habitat complexity that wild fish can

experience, also benefits lab strains, particularly when such interventions are balanced against costs, such as the increased difficulty of observing fish and the increased accumulation of detritus, which themselves can lead to morbidity and mortality. What is clear is that a deeper understanding of zebrafish natural history will benefit the health and well being of fish in the lab, as well as research productivity, when combined with a holistic view of variation in behavior, genetics, and the broader goals of lab research. The promise of integrating a deeper understanding of zebrafish ‘the organism’ with zebrafish ‘the system’ suggests exciting times to come for the devotees of Hamilton’s beautiful fish.

### Acknowledgements

Thanks to L Patterson, S McMenamin and T Larson for comments and discussion. Studies in the author’s laboratory are supported by NIH R01 GM096906 and NIH R01 GM111233.

### Funding

Funder	Grant reference number	Author
National Institutes of Health (NIH)	R01 GM096906	David M Parichy
National Institutes of Health (NIH)	R01 GM111233	David M Parichy

The funders had no role in study design, data collection and interpretation, or the decision to submit the work for publication.

### Author contributions

DMP, Drafting or revising the article

**David M Parichy** Department of Biology, University of Washington, Seattle, United States

**Competing interests:** The author declares that no competing interests exist.

**Received** 17 November 2014

**Accepted** 06 March 2015

**Published** 25 March 2015

### References

**1000 Genomes Project Consortium**, Abecasis GR, Auton A, Brooks LD, DePristo MA, Durbin RM, Handsaker RE, Kang HM, Marth GT, McVean GA. 2012. An integrated map of genetic variation from 1,092 human genomes. *Nature* **491**:56–65. doi: [10.1038/nature11632](https://doi.org/10.1038/nature11632).

**Adatto I**, Lawrence C, Thompson M, Zon LI. 2011. A new system for the rapid collection of large numbers of

developmentally staged zebrafish embryos. *PLOS ONE* **6**:e21715. doi: [10.1371/journal.pone.0021715](https://doi.org/10.1371/journal.pone.0021715).

**Anderson JL**, Rodríguez Mari A, Braasch I, Amores A, Hohenlohe P, Batzel P, Postlethwait JH. 2012. Multiple sex-associated regions and a putative sex chromosome in zebrafish revealed by RAD mapping and population genomics. *PLOS ONE* **7**:e40701. doi: [10.1371/journal.pone.0040701](https://doi.org/10.1371/journal.pone.0040701).

**Arunachalam M**, Raja M, Vijayakumar C, Malaiammal P, Mayden RL. 2013. Natural history of zebrafish (*Danio rerio*) in India. *Zebrafish* **10**:1–14. doi: [10.1089/zeb.2012.0803](https://doi.org/10.1089/zeb.2012.0803).

**Bloom HD**, Perlmutter A. 1977. A sexual aggregating pheromone system in the zebrafish, *Brachydanio rerio* (Hamilton-Buchanan). *Journal of Experimental Zoology* **199**:215–226. doi: [10.1002/jez.1401990206](https://doi.org/10.1002/jez.1401990206).

**Bradley KM**, Breyer JP, Melville DB, Broman KW, Knapik EW, Smith JR. 2011. An SNP-based linkage map for zebrafish reveals sex determination loci. *G3* **1**:3–9. doi: [10.1534/g3.111.000190](https://doi.org/10.1534/g3.111.000190).

**Britz R**, Conway KW, Ruber L. 2009. Spectacular morphological novelty in a miniature cyprinid fish, *Danionella dracula* n. sp. *Proceedings of the Royal Society B: Biological Sciences* **276**:2179–2186. doi: [10.1098/rspb.2009.0141](https://doi.org/10.1098/rspb.2009.0141).

**Brown KH**, Dobrinski KP, Lee AS, Gokcumen O, Mills RE, Shi X, Chong WW, Chen JY, Yoo P, David S, et al. 2012. Extensive genetic diversity and substructuring among zebrafish strains revealed through copy number variant analysis. *Proceedings of the National Academy of Sciences of USA* **109**:529–534. doi: [10.1073/pnas.1112163109](https://doi.org/10.1073/pnas.1112163109).

**Camp JG**, Jazwa AL, Trent CM, Rawls JF. 2012. Intronic cis-regulatory modules mediate tissue-specific and microbial control of *angptl4/fiaf* transcription. *PLoS Genetics* **8**:e1002585. doi: [10.1371/journal.pgen.1002585](https://doi.org/10.1371/journal.pgen.1002585).

**Cheesman SE**, Neal JT, Mittge E, Seredick BM, Guillemin K. 2011. Epithelial cell proliferation in the developing zebrafish intestine is regulated by the Wnt pathway and microbial signaling via Myd88. *Proceedings of the National Academy of Sciences of USA* **108**(Suppl 1):4570–4577. doi: [10.1073/pnas.1000072107](https://doi.org/10.1073/pnas.1000072107).

**Coe TS**, Hamilton PB, Griffiths AM, Hodgson DJ, Wahab MA, Tyler CR. 2009. Genetic variation in strains of zebrafish (*Danio rerio*) and the implications for ecotoxicology studies. *Ecotoxicology* **18**:144–150. doi: [10.1007/s10646-008-0267-0](https://doi.org/10.1007/s10646-008-0267-0).

**Darrow KO**, Harris WA. 2004. Characterization and development of courtship in zebrafish, *Danio rerio*. *Zebrafish* **1**:40–45. doi: [10.1089/154585404774101662](https://doi.org/10.1089/154585404774101662).

**Drew RE**, Settles ML, Churchill EJ, Williams SM, Balli S, Robison BD. 2012. Brain transcriptome variation among behaviorally distinct strains of zebrafish (*Danio rerio*). *BMC Genomics* **13**:323. doi: [10.1186/1471-2164-13-323](https://doi.org/10.1186/1471-2164-13-323).

**Engeszer R**, Da Barbiano L, Ryan M, Parichy D. 2007a. Timing and plasticity of shoaling behaviour in the zebrafish, *Danio rerio*. *Animal Behaviour* **74**:1269–1275. doi: [10.1016/j.anbehav.2007.01.032](https://doi.org/10.1016/j.anbehav.2007.01.032).

**Engeszer RE**, Patterson LB, Rao AA, Parichy DM. 2007b. Zebrafish in the wild: a review of natural history and new notes from the field. *Zebrafish* **4**:21–40. doi: [10.1089/zeb.2006.9997](https://doi.org/10.1089/zeb.2006.9997).

**Engeszer RE**, Ryan MJ, Parichy DM. 2004. Learned social preference in zebrafish. *Current Biology* **14**:881–884. doi: [10.1016/j.cub.2004.04.042](https://doi.org/10.1016/j.cub.2004.04.042).



- Engeszer RE**, Wang G, Ryan MJ, Parichy DM. 2008. Sex-specific perceptual spaces for a vertebrate basal social aggregative behavior. *Proceedings of the National Academy of Sciences of USA* **105**:929–933. doi: [10.1073/pnas.0708778105](https://doi.org/10.1073/pnas.0708778105).
- Fang F**. 1997a. *Danio maetaengensis*, a new species of cyprinid fish from northern Thailand. *Ichthyol Explor Freshwaters* **8**:41–48.
- Fang F**. 1997b. Redescription of *Danio kakhienensis*, a poorly known cyprinid fish from the Irrawaddy basin. *Ichthyol Explor Freshwaters* **7**:289–298.
- Fang F**. 2000. Barred *Danio* species from the Irrawaddy river drainage (Teleostei, cyprinidae). *Ichthyological Research* **47**:13–26. doi: [10.1007/BF02674309](https://doi.org/10.1007/BF02674309).
- Fang F**. 2003. Phylogenetic analysis of the Asian cyprinid genus *Danio* (Teleostei, Cyprinidae). *Copeia* **2003**:714–728. doi: [10.1643/IA03-131.1](https://doi.org/10.1643/IA03-131.1).
- Fang F**, Kottelat M. 1999. *Danio* species from northern Laos, with descriptions of three new species (Teleostei: Cyprinidae). *Ichthyol Explor Freshwaters* **10**:281–295.
- Fang F**, Noren M, Liao TY, Kallersjo M, Kullander SO. 2009. Molecular phylogenetic interrelationships of the south Asian cyprinid genera *Danio*, *Devario* and *Microrasbora* (Teleostei, Cyprinidae, Danioninae). *Zoologica Scripta* **38**:237–256. doi: [10.1111/j.1463-6409.2008.00373.x](https://doi.org/10.1111/j.1463-6409.2008.00373.x).
- Froese R**, Binohlan CB. 2014. 4653. *Danio rerio* (Hamilton 1822). Zebra danio. In: Froese R, Pauly D, editors. *FishBase*. [www.fishbase.org](http://www.fishbase.org).
- Frohnhofer HG**, Krauss J, Maischein HM, Nusslein-Volhard C. 2013. Iridophores and their interactions with other chromatophores are required for stripe formation in zebrafish. *Development* **140**:2997–3007. doi: [10.1242/dev.096719](https://doi.org/10.1242/dev.096719).
- Gerlach G**. 2006. Pheromonal regulation of reproductive success in female zebrafish: female suppression and male enhancement. *Animal Behaviour* **72**:1119–1124. doi: [10.1016/j.anbehav.2006.03.009](https://doi.org/10.1016/j.anbehav.2006.03.009).
- Gerlach G**, Lysiak N. 2006. Kin recognition and inbreeding avoidance in zebrafish, *Danio rerio*, is based on phenotype matching. *Animal Behaviour* **71**:1371–1377. doi: [10.1016/j.anbehav.2005.10.010](https://doi.org/10.1016/j.anbehav.2005.10.010).
- Gerlai R**. 2014. Social behavior of zebrafish: from synthetic images to biological mechanisms of shoaling. *Journal of Neuroscience Methods* **234**:59–65. doi: [10.1016/j.jneumeth.2014.04.028](https://doi.org/10.1016/j.jneumeth.2014.04.028).
- Grunwald DJ**, Eisen JS. 2002. Headwaters of the zebrafish – emergence of a new model vertebrate. *Nature Reviews Genetics* **3**:717–724. doi: [10.1038/nrg892](https://doi.org/10.1038/nrg892).
- Guryev V**, Koudijs MJ, Berezikov E, Johnson SL, Plasterk RH, van Eeden FJ, Cuppen E. 2006. Genetic variation in the zebrafish. *Genome Research* **16**:491–497. doi: [10.1101/gr.4791006](https://doi.org/10.1101/gr.4791006).
- Haffter P**, Granato M, Brand M, Mullins MC, Hammerschmidt M, Kane DA, Odenthal J, van Eeden FJ, Jiang YJ, Heisenberg CP, et al. 1996. The identification of genes with unique and essential functions in the development of the zebrafish, *Danio rerio*. *Development* **123**:1–36.
- Hamilton F**. 1822. *An account of the fishes found in the river ganges and its branches*. Edinburgh: Archibald Constable and Company.
- Harris MP**, Henke K, Hawkins MB, Witten PE. 2014. Fish is Fish: the use of experimental model species to reveal causes of skeletal diversity in evolution and disease. *Journal of Applied Ichthyology* **30**:616–629. doi: [10.1111/jai.12533](https://doi.org/10.1111/jai.12533).
- Howe K**, Clark MD, Torroja CF, Torrance J, Berthelot C, Muffato M, Collins JE, Humphray S, McLaren K, Matthews L, et al. 2013. The zebrafish reference genome sequence and its relationship to the human genome. *Nature* **496**:498–503. doi: [10.1038/nature12111](https://doi.org/10.1038/nature12111).
- Kang J**, Nachtrab G, Poss KD. 2013. Local Dkk1 crosstalk from breeding ornaments impedes regeneration of injured male zebrafish fins. *Developmental Cell* **27**:19–31. doi: [10.1016/j.devcel.2013.08.015](https://doi.org/10.1016/j.devcel.2013.08.015).
- Kinth P**, Mahesh G, Panwar Y. 2013. Mapping of zebrafish research: a global outlook. *Zebrafish* **10**:510–517. doi: [10.1089/zeb.2012.0854](https://doi.org/10.1089/zeb.2012.0854).
- Kullander SO**. 2012. Description of *Danio flagrans*, and redescription of *D. choprae*, two closely related species from the ayeayawaddy river drainage in northern Myanmar (Teleostei: Cyprinidae). *Ichthyological Exploration of Freshwaters* **23**:245–262.
- Kullander SO**, Fang F. 2009. *Danio aesculapii*, a new species of danio from south-western Myanmar (Teleostei: Cyprinidae). *Zootaxa* **41**:41–48.
- Kullander SO**, Liao TY, Fang F. 2009. *Danio quagga*, a new species of striped danio from western Myanmar (Teleostei: Cyprinidae). *Ichthyological Exploration of Freshwaters* **20**:193–199.
- LaFave MC**, Varshney GK, Vemulapalli M, Mullikin JC, Burgess SM. 2014. A defined zebrafish line for high-Throughput genetics and Genomics: NHGRI-1. *Genetics* **198**:167–170. doi: [10.1534/genetics.114.166769](https://doi.org/10.1534/genetics.114.166769).
- Liao TY**, Kullander SO, Fang F. 2011. Phylogenetic position of rasborin cyprinids and monophyly of major lineages among the Danioninae, based on morphological characters (Cypriniformes: Cyprinidae). *Journal of Zoological Systematics and Evolutionary Research* **49**:224–232. doi: [10.1111/j.1439-0469.2011.00621.x](https://doi.org/10.1111/j.1439-0469.2011.00621.x).
- Liew WC**, Bartfai R, Lim Z, Sreenivasan R, Siegfried KR, Orban L. 2012. Polygenic sex determination system in zebrafish. *PLOS ONE* **7**:e34397. doi: [10.1371/journal.pone.0034397](https://doi.org/10.1371/journal.pone.0034397).
- Mahabir S**, Chatterjee D, Buske C, Gerlai R. 2013. Maturation of shoaling in two zebrafish strains: a behavioral and neurochemical analysis. *Behavioural Brain Research* **247**:1–8. doi: [10.1016/j.bbr.2013.03.013](https://doi.org/10.1016/j.bbr.2013.03.013).
- Martins EP**, Bhat A. 2014. Population-level personalities in zebrafish: aggression-boldness across but not within populations. *Behavioral Ecology* **25**:368–373. doi: [10.1093/beheco/aru007](https://doi.org/10.1093/beheco/aru007).
- Mayden RL**, Chen WJ. 2010. The world's smallest vertebrate species of the genus *Paedocypris*: a new family of freshwater fishes and the sister group to the world's most diverse clade of freshwater fishes (Teleostei: Cypriniformes). *Molecular Phylogenetics and Evolution* **57**:152–175. doi: [10.1016/j.ympev.2010.04.008](https://doi.org/10.1016/j.ympev.2010.04.008).
- Mayden RL**, Tang KL, Conway KW, Freyhof J, Chamberlain S, Haskins M, Schneider L, Sudkamp M, Wood RM, Agnew M, et al. 2007. Phylogenetic relationships of *Danio* within the order Cypriniformes: a framework for comparative and evolutionary studies of a model species. *Journal of Experimental Zoology Part B, Molecular and Developmental Evolution* **308**:642–654. doi: [10.1002/jez.b.21175](https://doi.org/10.1002/jez.b.21175).
- McClure M**. 1999. Development and evolution of melanophore patterns in fishes of the genus *Danio*

- (Teleostei: Cyprinidae). *Journal of Morphology* **241**: 83–105. doi: [10.1002/\(SICI\)1097-4687\(199907\)241:13.0.CO;2-H](https://doi.org/10.1002/(SICI)1097-4687(199907)241:13.0.CO;2-H).
- McClure MM**, McIntyre PB, McCune AR. 2006. Notes on the natural diet and habitat of eight danionin fishes, including the zebrafish *Danio rerio*. *Journal of Fish Biology* **69**:553–570. doi: [10.1111/j.1095-8649.2006.01125.x](https://doi.org/10.1111/j.1095-8649.2006.01125.x).
- McCluskey BM**, Postlethwait JH. 2015. Phylogeny of zebrafish, a 'Model species', within *Danio*, a 'Model genus'. *Molecular Biology and Evolution* **32**:635–652. doi: [10.1093/molbev/msu325](https://doi.org/10.1093/molbev/msu325).
- McCune AR**, Fuller RC, Aquilina AA, Dawley RM, Fadool JM, Houle D, Travis J, Kondrashov AS. 2002. A low genomic number of recessive lethals in natural populations of bluefin killifish and zebrafish. *Science* **296**:2398–2401. doi: [10.1126/science.1071757](https://doi.org/10.1126/science.1071757).
- McCune AR**, Houle D, McMillan K, Annable R, Kondrashov AS. 2004. Two classes of deleterious recessive alleles in a natural population of zebrafish, *Danio rerio*. *Proceedings of the Royal Society B: Biological Sciences* **271**:2025–2033. doi: [10.1098/rspb.2004.2787](https://doi.org/10.1098/rspb.2004.2787).
- McMenamin SK**, Bain EJ, McCann AE, Patterson LB, Eom DS, Waller ZP, Hamill JC, Kuhlman JA, Eisen JS, Parichy DM. 2014. Thyroid hormone-dependent adult pigment cell lineage and pattern in zebrafish. *Science* **345**:1358–1361. doi: [10.1126/science.1256251](https://doi.org/10.1126/science.1256251).
- Mills MG**, Nuckels RJ, Parichy DM. 2007. Deconstructing evolution of adult phenotypes: genetic analyses of kit reveal homology and evolutionary novelty during adult pigment pattern development of *Danio* fishes. *Development* **134**:1081–1090. doi: [10.1242/dev.02799](https://doi.org/10.1242/dev.02799).
- Moretz JA**, Martins EP, Robison BD. 2007. Behavioral syndromes and the evolution of correlated behavior in zebrafish. *Behavioral Ecology* **18**:556–562. doi: [10.1093/beheco/arm011](https://doi.org/10.1093/beheco/arm011).
- Mueller KP**, Neuhauss SC. 2014. Sunscreen for fish: co-option of UV light protection for camouflage. *PLOS ONE* **9**:e87372. doi: [10.1371/journal.pone.0087372](https://doi.org/10.1371/journal.pone.0087372).
- Müller F**, Blader P, Strahle U. 2002. Search for enhancers: teleost models in comparative genomic and transgenic analysis of cis regulatory elements. *Bioessays* **24**:564–572. doi: [10.1002/bies.10096](https://doi.org/10.1002/bies.10096).
- Nakamasu A**, Takahashi G, Kanbe A, Kondo S. 2009. Interactions between zebrafish pigment cells responsible for the generation of Turing patterns. *Proceedings of the National Academy of Sciences of USA* **106**:8429–8434. doi: [10.1073/pnas.0808622106](https://doi.org/10.1073/pnas.0808622106).
- Nasiadka A**, Clark MD. 2012. Zebrafish breeding in the laboratory environment. *ILAR Journal* **53**:161–168. doi: [10.1093/ilar.53.2.161](https://doi.org/10.1093/ilar.53.2.161).
- Nechiporuk A**, Finney JE, Keating MT, Johnson SL. 1999. Assessment of polymorphism in zebrafish mapping strains. *Genome Research* **9**:1231–1238. doi: [10.1101/gr.9.12.1231](https://doi.org/10.1101/gr.9.12.1231).
- Norton WH**, Stumpfenhorst K, Faus-Kessler T, Folchert A, Rohner N, Rohner N, Harris MP, Callebert J, Bally-Cuif L. 2011. Modulation of Fgfr1a signaling in zebrafish reveals a genetic basis for the aggression-boldness syndrome. *Journal of Neuroscience* **31**:13796–13807. doi: [10.1523/JNEUROSCI.2892-11.2011](https://doi.org/10.1523/JNEUROSCI.2892-11.2011).
- Oswald M**, Robison BD. 2008. Strain-specific alteration of zebrafish feeding behavior in response to aversive stimuli. *Canadian Journal of Zoology* **86**:1085–1094. doi: [10.1139/Z08-085](https://doi.org/10.1139/Z08-085).
- Oswald ME**, Singer M, Robison BD. 2013. The quantitative genetic architecture of the bold-shy continuum in zebrafish, *Danio rerio*. *PLOS ONE* **8**:e68828. doi: [10.1371/journal.pone.0068828](https://doi.org/10.1371/journal.pone.0068828).
- Parichy DM**. 2005. Chapter 20. Variation and developmental biology: prospects for the future. In: Halgrimsson B, Hall BK, editors. *Variation: a hierarchical examination of a central concept in biology*. New York, NY: Academic Press. p. 475–498.
- Parichy DM**. 2006. Evolution of *danio* pigment pattern development. *Heredity* **97**:200–210. doi: [10.1038/sj.hdy.6800867](https://doi.org/10.1038/sj.hdy.6800867).
- Parichy DM**, Johnson SL. 2001. Zebrafish hybrids suggest genetic mechanisms for pigment pattern diversification in *Danio*. *Development Genes and Evolution* **211**:319–328. doi: [10.1007/s004270100155](https://doi.org/10.1007/s004270100155).
- Parichy DM**, Spiewak JE. 2015. Origins of adult pigmentation: diversity in pigment stem cell lineages and implications for pattern evolution. *Pigment Cell & Melanoma Research* **28**:31–50. doi: [10.1111/pcmr.12332](https://doi.org/10.1111/pcmr.12332).
- Patwary A**, Purkanti R, Singh M, Chauhan R, Singh AR, Swarnkar M, Singh N, Pandey V, Torroja C, Clark MD, et al. 2013. A sequence-based variation map of zebrafish. *Zebrafish* **10**:15–20. doi: [10.1089/zeb.2012.0848](https://doi.org/10.1089/zeb.2012.0848).
- Patterson LB**, Bain EJ, Parichy DM. 2014. Pigment cell interactions and differential xanthophore recruitment underlying zebrafish stripe reiteration and *Danio* pattern evolution. *Nature Communications* **5**:5299. doi: [10.1038/ncomms6299](https://doi.org/10.1038/ncomms6299).
- Patterson LB**, Parichy DM. 2013. Interactions with iridophores and the tissue environment required for patterning melanophores and xanthophores during zebrafish adult pigment stripe formation. *PLOS Genetics* **9**:e1003561. doi: [10.1371/journal.pgen.1003561](https://doi.org/10.1371/journal.pgen.1003561).
- Paul GC**, Filby AL, Giddins HG, Coe TS, Hamilton PB, Tyler CR. 2010. Dominance hierarchies in zebrafish (*Danio rerio*) and their relationship with reproductive success. *Zebrafish* **7**:109–117. doi: [10.1089/zeb.2009.0618](https://doi.org/10.1089/zeb.2009.0618).
- Price AC**, Weadick CJ, Shim J, Rodd FH. 2008. Pigments, patterns, and fish behavior. *Zebrafish* **5**: 297–307. doi: [10.1089/zeb.2008.0551](https://doi.org/10.1089/zeb.2008.0551).
- Pritchard VL**, Lawrence J, Butlin RK, Krause J. 2001. Shoal choice in zebrafish, *Danio rerio*: the influence of shoal size and activity. *Animal Behaviour* **62**:1085–1088. doi: [10.1006/anbe.2001.1858](https://doi.org/10.1006/anbe.2001.1858).
- Quigley IK**, Manuel JL, Roberts RA, Nuckels RJ, Herrington ER, MacDonald EL, Parichy DM. 2005. Evolutionary diversification of pigment pattern in *Danio* fishes: differential *fms* dependence and stripe loss in *D. albolineatus*. *Development* **132**:89–104. doi: [10.1242/dev.01547](https://doi.org/10.1242/dev.01547).
- Quigley IK**, Turner JM, Nuckels RJ, Manuel JL, Budi EH, MacDonald EL, Parichy DM. 2004. Pigment pattern evolution by differential deployment of neural crest and post-embryonic melanophore lineages in *Danio* fishes. *Development* **131**:6053–6069. doi: [10.1242/dev.01526](https://doi.org/10.1242/dev.01526).
- Rauch GJ**, Granato M, Haffter P. 1997. A polymorphic zebrafish line for genetic mapping using SSLPs on high-percentage agarose gels. *Tech Tips Online*:T01208.
- Roberts T**. 1986. *Danionella translucida*, a new genus and species of cyprinid fish from Burma, one of the

- smallest living vertebrates. *Environmental Biology of Fishes* **16**:231–241. doi: [10.1007/BF00842977](https://doi.org/10.1007/BF00842977).
- Robison BD**, Rowland W. 2005. A potential model system for studying the genetics of domestication: behavioral variation among wild and domesticated strains of zebra danio (*Danio rerio*). *Canadian Journal of Fisheries and Aquatic Sciences* **62**:2046–2054. doi: [10.1139/f05-118](https://doi.org/10.1139/f05-118).
- Roeselers G**, Mittge EK, Stephens WZ, Parichy DM, Cavanaugh CM, Guillemin K, Rawls JF. 2011. Evidence for a core gut microbiota in the zebrafish. *The ISME Journal* **5**:1595–1608. doi: [10.1038/ismej.2011.38](https://doi.org/10.1038/ismej.2011.38).
- Rüber L**, Kottelat M, Tan HH, Ng PK, Britz R. 2007. Evolution of miniaturization and the phylogenetic position of Paedocypris, comprising the world's smallest vertebrate. *BMC Evolutionary Biology* **7**:38. doi: [10.1186/1471-2148-7-38](https://doi.org/10.1186/1471-2148-7-38).
- Ruhl N**, McRobert SP, Currie WJ. 2009. Shoaling preferences and the effects of sex ratio on spawning and aggression in small laboratory populations of zebrafish (*Danio rerio*). *Lab Animal* **38**:264–269. doi: [10.1038/labon0809-264](https://doi.org/10.1038/labon0809-264).
- Semova I**, Carten JD, Stombaugh J, Mackey LC, Knight R, Farber SA, Rawls JF. 2012. Microbiota regulate intestinal absorption and metabolism of fatty acids in the zebrafish. *Cell Host & Microbe* **12**:277–288. doi: [10.1016/j.chom.2012.08.003](https://doi.org/10.1016/j.chom.2012.08.003).
- Sessa AK**, White R, Houvras Y, Burke C, Pugach E, Baker B, Gilbert R, Thomas Look A, Zon LI. 2008. The effect of a depth gradient on the mating behavior, oviposition site preference, and embryo production in the zebrafish, *Danio rerio*. *Zebrafish* **5**:335–339. doi: [10.1089/zeb.2008.0535](https://doi.org/10.1089/zeb.2008.0535).
- Skinner AMJ**, Watt PJ. 2007. Strategic egg allocation in the zebra fish, *Danio rerio*. *Behavioral Ecology* **18**: 905–909. doi: [10.1093/beheco/arm059](https://doi.org/10.1093/beheco/arm059).
- Spence R**, Ashton R, Smith C. 2007a. Oviposition decisions are mediated by spawning site quality in wild and domesticated zebrafish, *Danio rerio*. *Behaviour* **144**:953–966. doi: [10.1163/156853907781492726](https://doi.org/10.1163/156853907781492726).
- Spence R**, Fatema MK, Ellis S, Ahmed ZF, Smith C. 2007b. Diet, growth and recruitment of wild zebrafish in Bangladesh. *Journal of Fish Biology* **71**:304–309. doi: [10.1111/j.1095-8649.2007.01492.x](https://doi.org/10.1111/j.1095-8649.2007.01492.x).
- Spence R**, Fatema MK, Reichard M, Huq KA, Wahab MA, et al. 2006. The distribution and habitat preferences of the zebrafish in Bangladesh. *Journal of Fish Biology* **69**:1435–1448. doi: [10.1111/j.1095-8649.2006.01206.x](https://doi.org/10.1111/j.1095-8649.2006.01206.x).
- Spence R**, Gerlach G, Lawrence C, Smith C. 2008. The behaviour and ecology of the zebrafish, *Danio rerio*. *Biological Reviews of the Cambridge Philosophical Society* **83**:13–34. doi: [10.1111/j.1469-185X.2007.00030.x](https://doi.org/10.1111/j.1469-185X.2007.00030.x).
- Spence R**, Smith C. 2006. Mating preference of female zebrafish, *Danio rerio*, in relation to male dominance. *Behavioral Ecology* **17**:779–783. doi: [10.1093/beheco/arl016](https://doi.org/10.1093/beheco/arl016).
- Spence R**, Smith C. 2007. The role of early learning in determining shoaling preferences based on visual cues in the zebrafish, *Danio rerio*. *Ethology* **113**:62–67. doi: [10.1111/j.1439-0310.2006.01295.x](https://doi.org/10.1111/j.1439-0310.2006.01295.x).
- Streisinger G**, Walker C, Dower N, Knauber D, Singer F. 1981. Production of clones of homozygous diploid zebra fish (*Brachydanio rerio*). *Nature* **291**:293–296. doi: [10.1038/291293a0](https://doi.org/10.1038/291293a0).
- Tang KL**, Agnew MK, Hirt MV, Sado T, Schneider LM, Freyhof J, Sulaiman Z, Swartz E, Vidthayanon C, Miya M, et al. 2010. Systematics of the subfamily danioninae (Teleostei: Cypriniformes: cyprinidae). *Molecular Phylogenetics and Evolution* **57**:189–214. doi: [10.1016/j.ympev.2010.05.021](https://doi.org/10.1016/j.ympev.2010.05.021).
- Trevarrow B**, Robison B. 2004. Genetic backgrounds, standard lines, and husbandry of zebrafish. *Methods in Cell Biology* **77**:599–616. doi: [10.1016/S0091-679X\(04\)77032-6](https://doi.org/10.1016/S0091-679X(04)77032-6).
- van den Hurk R**, Lambert JGD. 1983. Ovarian steroid glucuronides function as sex pheromones for male zebrafish, *Brachydanio rerio*. *Canadian Journal of Zoology* **61**:2381–2387. doi: [10.1139/z83-317](https://doi.org/10.1139/z83-317).
- van den Hurk R**, Schoonen WG, van Zoelen GA, Lambert JGD. 1987. The biosynthesis of steroid glucuronides in the testis of the zebrafish, *Brachydanio rerio*, and their pheromonal function as ovulation inducers. *General and Comparative Endocrinology* **68**: 179–188. doi: [10.1016/0016-6480\(87\)90027-X](https://doi.org/10.1016/0016-6480(87)90027-X).
- Watanabe M**, Kondo S. 2015. Is pigment patterning in fish skin determined by the Turing mechanism? *Trends in Genetics* **31**:88–96. doi: [10.1016/j.tig.2014.11.005](https://doi.org/10.1016/j.tig.2014.11.005).
- Whiteley AR**, Bhat A, Martins EP, Mayden RL, Arunachalam M, Uusi-Heikkilä S, Ahmed AT, Shrestha J, Clark M, Stemple D, et al. 2011. Population genomics of wild and laboratory zebrafish (*Danio rerio*). *Molecular Ecology* **20**: 4259–4276. doi: [10.1111/j.1365-294X.2011.05272.x](https://doi.org/10.1111/j.1365-294X.2011.05272.x).
- Wilson CA**, High SK, McCluskey BM, Amores A, Yan YL, Titus TA, Anderson JL, Batzel P, Carvan MJ III, Schartl M, et al. 2014. Wild sex in zebrafish: loss of the natural sex determinant in domesticated strains. *Genetics* **198**: 1291–1308. doi: [10.1534/genetics.114.169284](https://doi.org/10.1534/genetics.114.169284).
- Wright D**, Nakamichi R, Krause J, Butlin RK. 2006. QTL analysis of behavioral and morphological differentiation between wild and laboratory zebrafish (*Danio rerio*). *Behavior Genetics* **36**:271–284. doi: [10.1007/s10519-005-9029-4](https://doi.org/10.1007/s10519-005-9029-4).